

Area Crop Report 9/2 – 9/6

Corn

Semitrucks have been a common sight the past week, at all locations, with test weight's showing promise for yields and moisture contents in optimal range. As harvest continues to roll on, just a reminder that grain locations will be open from 8AM to 8PM Monday through Saturday and from 1PM to 6PM on Sunday.

Soybeans

Soybeans continue to progress with the majority found in the R3 (beginning pod) stage to the R6 (full seed) stage, varying by planting date. When looking at applying foliar feeds, this would be the optimal window if that is a consideration on your farm. Applying at low rates during cooler temperatures will help avoid damaging plant tissues.

Pests

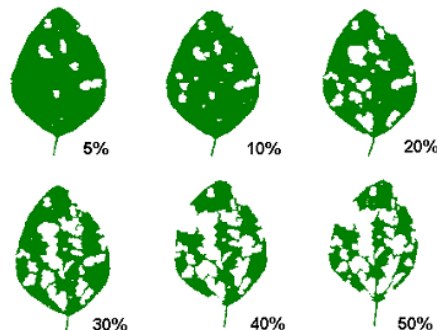
Soybean podworms, also known as corn earworms, can be a real threat as seeds begin and continue to develop. These pests are more persistent in later planted fields; double-crop beans may be more affected than full season. Control measures should be considered when an average of one small worm per foot of row is detected. Insecticide applications will be most beneficial when the pest are small sized larvae, and is recommended if 5 to 10% or more of the soybean pods exhibit feeding damage from the podworm larvae. For other troublesome pests, thresholds may refer to leaf defoliation percentages. These percentages vary by pest, and a diagram is shown at the bottom of the report to use as a reference.

Disease and Deficiencies

Soybeans are most vulnerable to disease during flowering and pod development. With the recent dry and hot weather, charcoal rot, a fungal disease caused by the fungus *Macrophomina phaseolina*, may be of concern. The fungus develops when there is a high pathogen level in the soil and plants are stressed from hot, dry weather. Symptoms include smaller leaves, yellowing, wilting, and reduced pod set, typically appearing on the lower stem during the reproductive stages. Frogeye leaf spot is another fungal disease, *Cercospora sojina*, that favors warm, humid weather, but is commonly mistaken for other diseases or herbicide injury.

Agronomy Updates

As corn continues to get harvested across the area, wheat planning and management strategies are slowly being brought up for the 2025 growing season. Our wheat cleaning facility, located in Liberal, MO, has been busy getting ready for the planting season. For questions regarding variety type, seed treatment, and inoculants contact Kyle Montee at our Liberal location. Likewise, our agronomy team can help with fertilizer management strategies, nutrient recommendations, herbicide modes of action, along with planting depth and timing. Our soil fertility trials and data show promise towards an enhanced wheat crop, stop in and ask us about it!



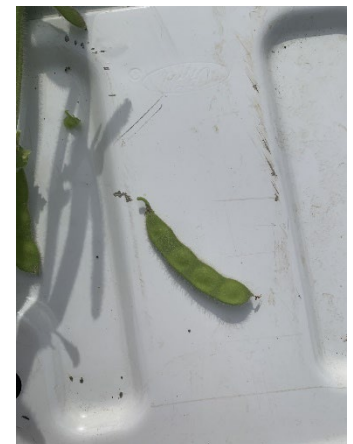
Percent soybean leaf defoliation reference



Combines found across Southeast Kansas and Southwest Missouri over the past few weeks



Foliar feed trial being applied on Asgrow soybeans, R4 stage



Soybean pod with four developing seeds